



# Company Portfolio



Welcome to

## Rome Construction

Amidst the significant economic influence on the Nigerian construction industry. We have taken it upon ourselves to introduce sustainable and innovative solutions that create long-term cost savings for our customers

# Table of Content

## Section 1

### About Us

Mission statement

Purpose

Core value & beliefs

Company strategy & business sectors

Network of branches

## Section 2

### Our Services

List of available service

## Section 3

### Ceo's speech

The CEO statement

## Section 4

### Our Projects

Project pictures

Some Completed Projects

Client we have worked with

# About Us

Rome Construction Company Limited which was established on the 3rd day of May, 1986 is the brainchild of a man who set out to prove that it is possible for Nigerians to run a wholly indigenous company in a most professional and organized manner.

Thus, when Engr. Rowland, E. Okam registered this firm as appropriate in 1986, with the motivation to go into construction of building and civil engineering works, it was not largely born for the purpose of profit alone but also of bringing respectability, and modernization to a known profession.

Today, with 3 offices in Nigeria including our head office in Abuja, the Federal Capital Territory. Rome construction Company Limited has met more than the initial aspirations of its Founder.

With a dedicated crop of employees and total hope on God the Almighty, the firm is irrevocably set to translate their vision to stand the test of time.

## MISSION STATEMENT

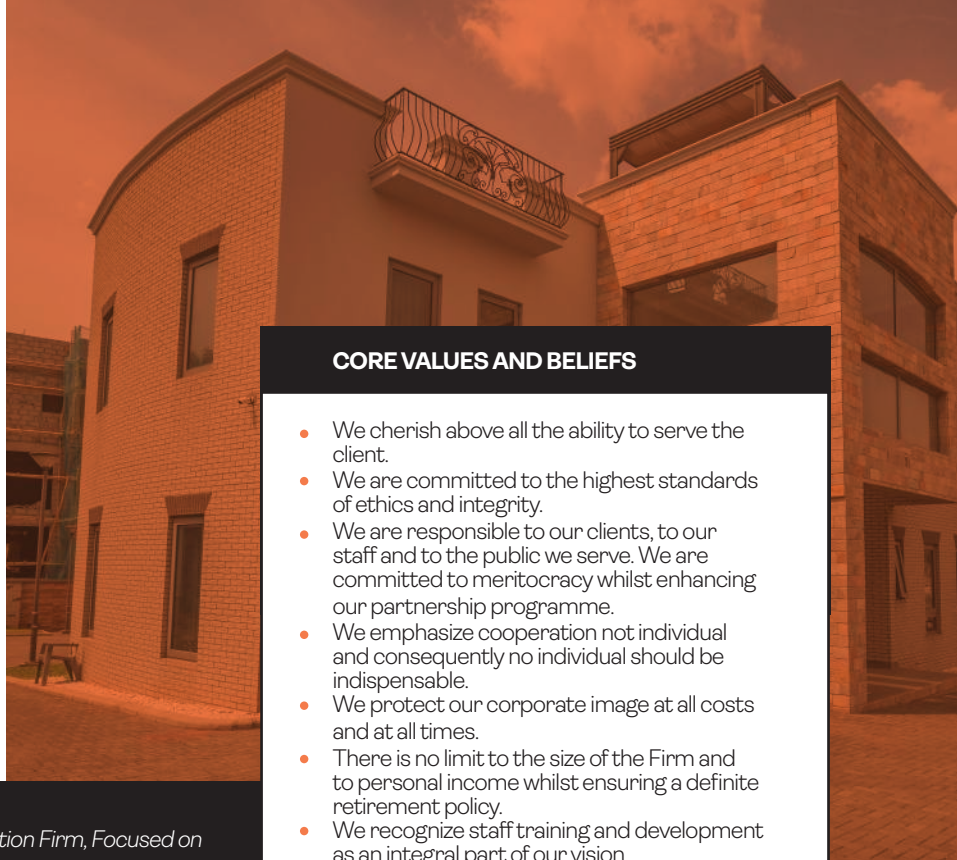
*To build an Enviable & Respectable Modern Construction Firm, Focused on integrity, Client Service and Team Work.*

## PURPOSE

*Provision of Excellent Real Construction Service worldwide.*

## CORE VALUES AND BELIEFS

- We cherish above all the ability to serve the client.
- We are committed to the highest standards of ethics and integrity.
- We are responsible to our clients, to our staff and to the public we serve. We are committed to meritocracy whilst enhancing our partnership programme.
- We emphasize cooperation not individual and consequently no individual should be indispensable.
- We protect our corporate image at all costs and at all times.
- There is no limit to the size of the Firm and to personal income whilst ensuring a definite retirement policy.
- We recognize staff training and development as an integral part of our vision.



## COMPANY STRATEGY & BUSINESS SECTORS

The company's image is rooted in its meticulous planning and attention to details in any project. Developing a strategy during the pre-construction phase sets the tone for the entire construction lifecycle. We work in collaboration with specialist construction teams in different disciplines which has created an environment that fosters innovation in construction practices.

We provide Construction solutions to challenges in the following industries: *Residential, Commercial, Hospitality, Healthcare, Education, Government.*

## Our capabilities

1. Building Restoration and renovations.
2. Interior design and fit-out.
3. Landscaping.
4. Structural Steel Work: Overhead Tank, Aluminium roofing
5. Water Supply and drainage systems: Bulk water supply, Underground reservoir tanks, Water distribution networks, Canals.
6. Roads and Geotechnical works: Construction of rural and Urban roads, Retaining wall.

## Our strengths

### Dedicated employees

Our employees bring a level of dedication and sense of duty to their responsibilities. They understand the standard we strive for and ensure it is achieved in every project.

### Quality

Rome Construction ensures that the best materials are used along with expertise with the capacity to problem solve. In a largely competitive sector, our niche for high-value solutions from material selection and project finishing puts us at the forefront.

### Health & Safety

Our company believes that an effective HSE program should always be put in place to ensure the safety of employees, subcontractors, the general public and the surrounding environment. This is sustained through training, monitoring and control procedures.

### Corporate Social Responsibility (CSR)

It is within our CSR framework to adopt sustainable construction solutions in order to reduce our waste impact and carbon footprint on the environment. That is why we have created an adoptive framework that enables the adoption of new technology and solutions.

## NETWORK OF BRANCHES

**Head office:** Suite 24 Crown Plaza, Eke 'A' Yesufu Close, Behind Eternal Filling Station, Utako District, Abuja. FCT.

**Tel:** 08033381420, 09065974084.

### Branch offices:

**Abia State:** 192 Hospital Road, Aba

**Tel:** 08058565699.

**Enugu State:** Discovery Plaza, by Akalaka junction Newhaven, Enugu.





# Our Services

List of available services

## PROPERTY DEVELOPMENT/ PROJECT MANAGEMENT

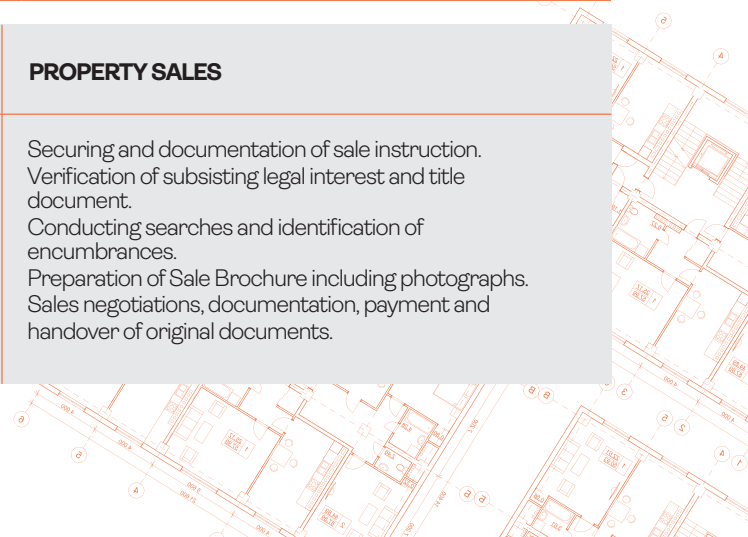
- Raising financial facilities for fresh/on-going projects.
- Renovation/Completion of properties.
- Processing of Building Plan/Certificate of Occupancy.
- Consulting on Real Estate investments.
- Technical and administrative coordination of construction activities on building sites.
- Financial and budgetary control of phased disbursement of funds.
- Co-ordination of human and material resources to enhance unity/sense of purpose.
- Enforcing actualization of design concepts with minimal changes.

## PROPERTY MANAGEMENT

- Management of commercial high-rise structures and shopping complexes amongst others.
- Keeping of property records and documentation of all management agreement.
- Assessment of dilapidation, supervision of all repair and maintenance works.
- Regular review of the potentials of the property.
- Treatment of rates and bills including negotiation of such with appropriate authorities.

## PROPERTY SALES

- Securing and documentation of sale instruction.
- Verification of subsisting legal interest and title document.
- Conducting searches and identification of encumbrances.
- Preparation of Sale Brochure including photographs.
- Sales negotiations, documentation, payment and handover of original documents.



# The Chief Executive's Statement



Our watch word has been EXCELLENT SERVICE and PROFESSIONALISM.

The Organization started on a common vision, focus, integrity, sacrifice and discipline. We believe in a business outfit that survives it's founder: We embark on firm centered businesses which does not only have the past in focus but also a glorious future.

The firm looks forward to a professional staff strength of 150 to 300 and partnership strength of 50. Every staff in the firm is a potential partner. Through provision of excellent construction services, we expect a revolution in building and civil works in Nigeria.

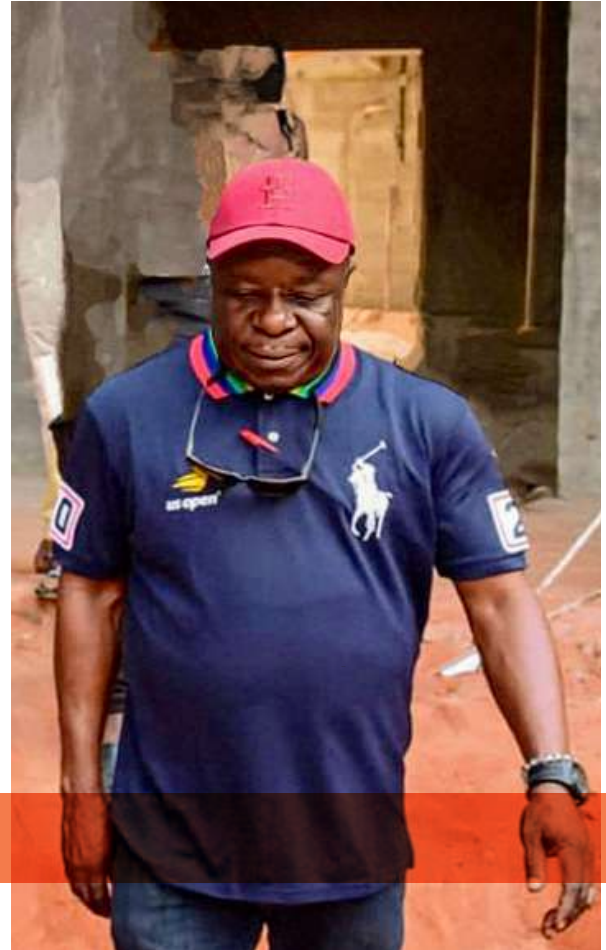
Our watch word has been *EXCELLENT SERVICE* and *PROFESSIONALISM*.

Quite a number of things were put in place and with God's help we have come this far. We hope to be one of the most efficient construction giants worldwide and serve the interest of all our clients at the best and highest levels.

We hope to be as strategic in our outlook at the globalization in the world and position ourselves to take advantage for the continued growth and improvement of our services.

Through innovations and launching of new products, we hope to meet the needs of our immediate environments in our various locations worldwide.

*Engr. Rowland E. Okam*



# Our Projects

Project pictures

01

PROJECT: Residential

LOCATION: Iseyin, Oyo State

STATUS: Completed















**03**

**PROJECT:** Residential

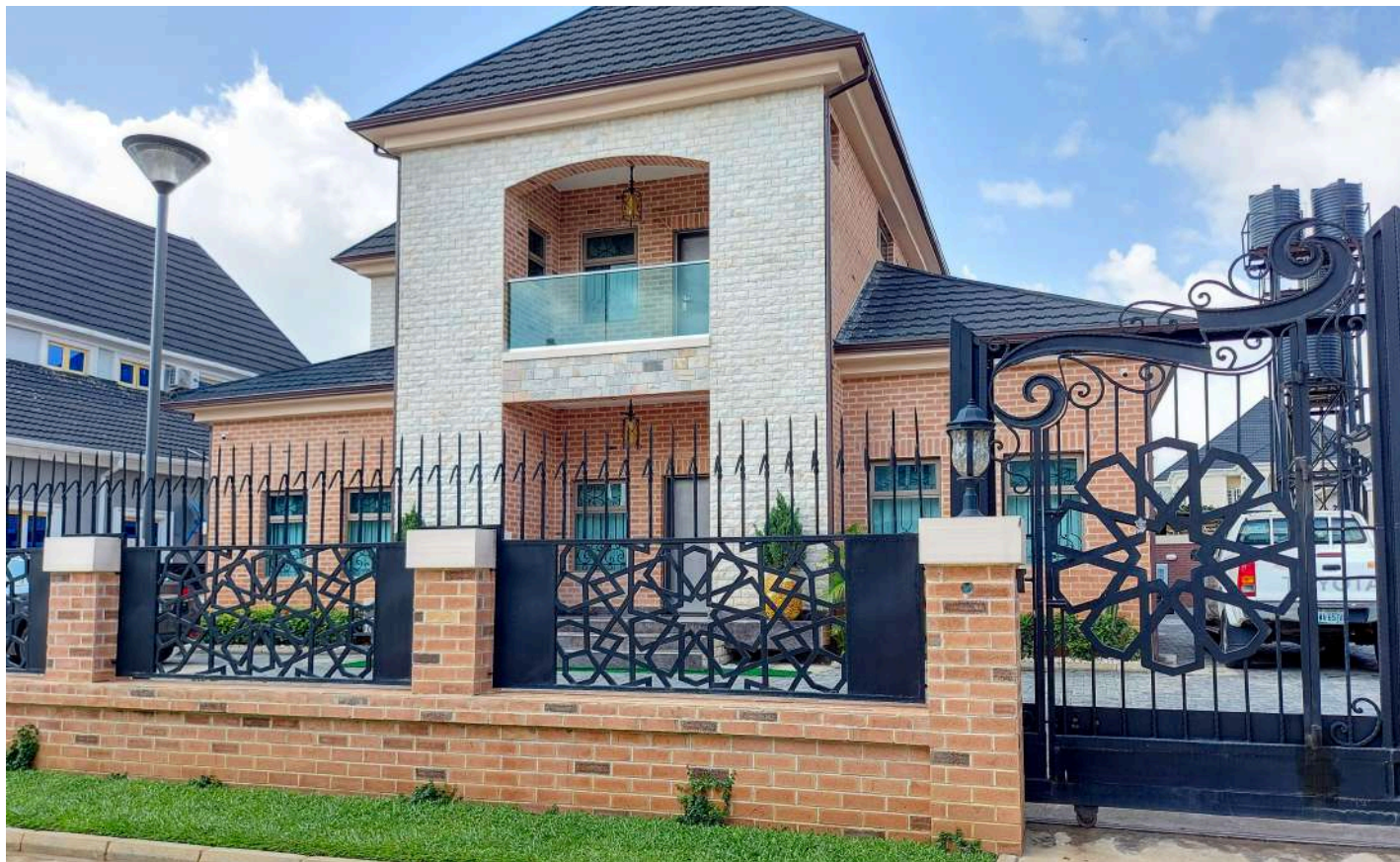
**LOCATION:** Ibadan, Oyo State

**STATUS:** Ongoing

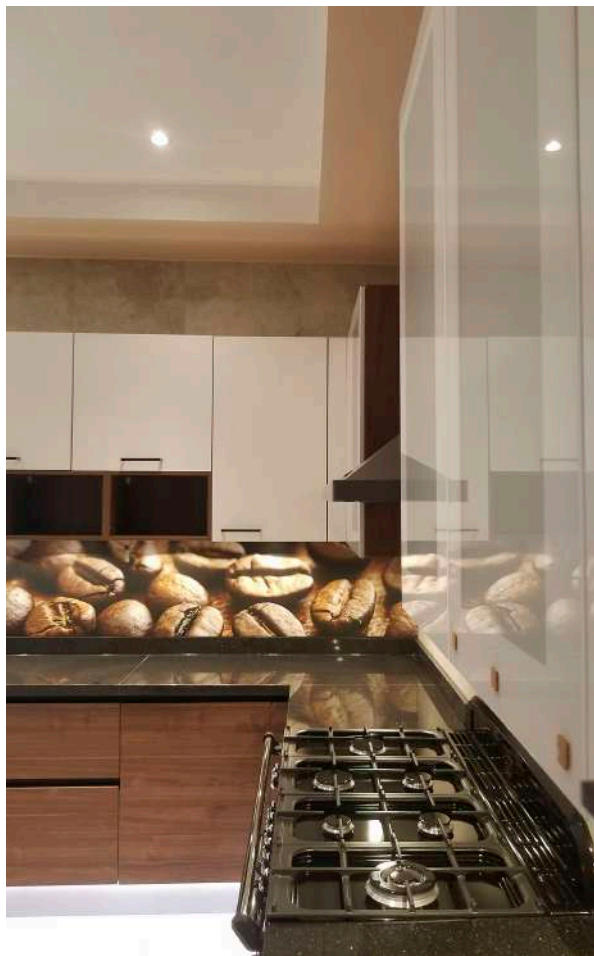












**05**

**PROJECT:** Residential

**LOCATION:** Ikeja, Lagos State

**STATUS:** Completed









**06**

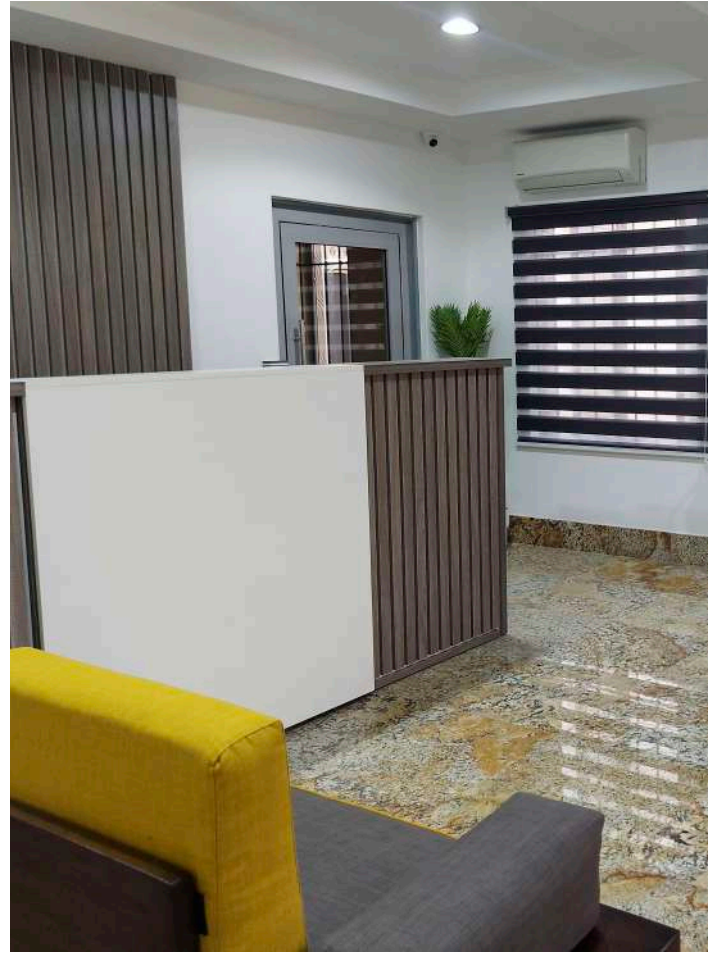
**PROJECT:** Commercial

**LOCATION:** Ikeja, Lagos State

**STATUS:** Completed









**07**

**PROJECT: Education**

**LOCATION: Oraifite, Anambra**

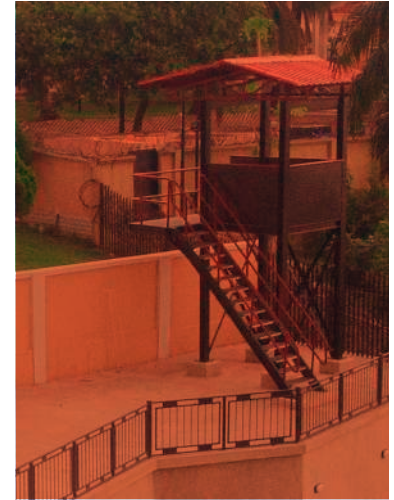
**STATUS: Completed**





## SOME COMPLETED PROJECTS:

- 4 floor Luxury Residential Apartment at Cocaine Village, Portharcourt
- 23 Duplex Shell Co-operative Staff Estate, MCC Portharcourt
- Oxygen Hotel & Suites, Owerri
- Country Home at Okpanku, Enugu
- 8 Flats Residential Apartment, New Haven, Enugu
- Roots Restaurant/Cafe, Okpara Square, Enugu
- Crunchies Plus, Agbani Road Enugu
- Discovery Hotel & Suites, New Haven, Enugu
- Multi-faceted renovation of a residential complex at M9, Independence L/O, Enugu
- Renovation of a residential complex and landscaping at Imoke Steet, GRA, Enugu
- Renovation of the Enugu Liason office building at Cadatral Zone, Abuja
- Construction of a residential building at the Ejulu East (Zoo) Estate, Enugu
- Re-modelling of terrace building at GRA, Enugu
- Construction of an Ultra-mordern residential building at Nsukka.



## CLIENT WE HAVE WORKED





### Head Office:

Suite 24 Crown Plaza, Eke,  
Ayesufu Close Utako, Abuja, Nigeria.

### Branch Offices:

#### Abia State

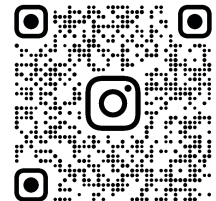
192 Hospital Road, Aba

#### Enugu State.

Discovery Plaza, by Akalaka junction  
Newhaven, Enugu.

#### Tel:

+234 803 3381 420.  
+234 805 8565 699



@ROMECCCLTD